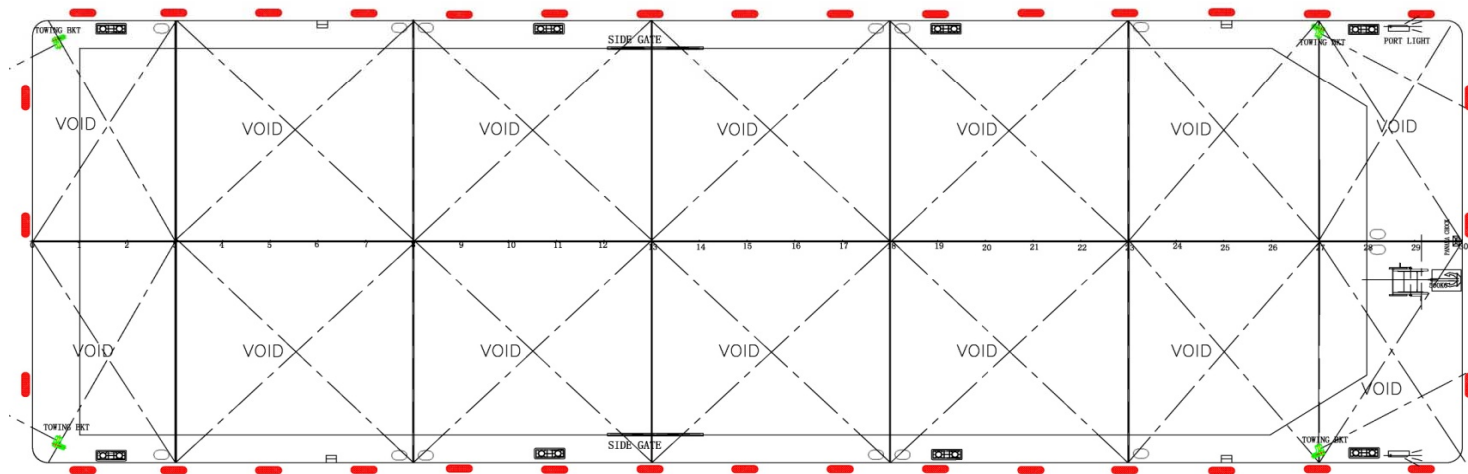
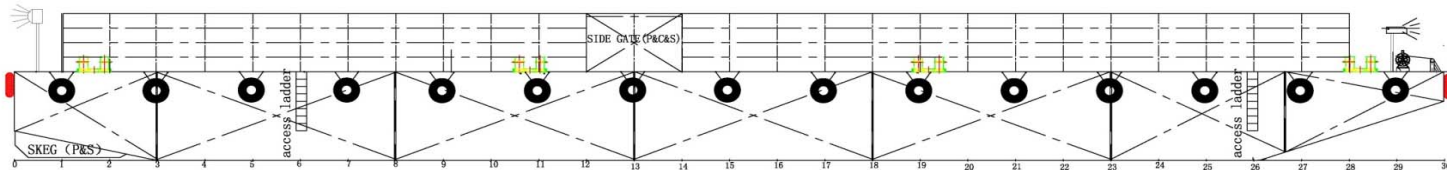




# INFINITI MARINE PTE LTD

76 PLAYFAIR RD, LHK 2, #03-05, SINGAPORE 367996  
TEL: 62864180 FAX: 62874180

## STEEL FLAT TOP DECK CARGO BARGE - INFINITI 5 (WITH SIDEBOARD)



### PRINCIPAL PARTICULARS

CLASS	ABS
PORT OF REGISTRY	SINGAPORE
YEAR BUILT	2011
WHERE BUILT	CHINA
LENGTH (OA)	54.86m (180')
BREADTH (MLD)	18.29m (60')
DEPTH (MLD)	3.66m (12')
GRT / NRT	934 / 280
DECK LOAD	10 T / M2

Owner gives no warranty as to the correctness of the particulars contained herein